

Confined Space Assessment – Crawl Spaces Under Buildings The Australian National University

Sep-Nov, 2023

Table of Contents

1	Introduction	3
1.1	Objective.....	3
1.2	Scope	3
2	Assessment Criteria	3
3	Confined Space Determination.....	7
3.1	Crawl spaces under buildings	7
4	Entry Requirements	10
5	Rescue Procedures.....	11
6	Conclusion.....	11
7	Limitations	11
8	References	12

1 Introduction

Robson Environmental (Robson) conducted a confined space assessment on 13 September 2023, in several restricted spaces located throughout the Australian National University (ANU) campus in Acton, on behalf of ANU.

1.1 Objective

The purpose of this assessment was to determine if locations accessed by ANU staff and contractors are classified as confined spaces and provide tools for management of access to confined spaces.

1.2 Scope

The confined space assessment includes a visual inspection of the restricted areas identified by ANU, for determination of whether the area meets the classification requirements for a confined space against:

- ACT Work Health and Safety Act and Regulation, 2011;
- Australian Standard, AS2865 – 2009, Confined spaces; and
- Safe Work Australia Code of Practice – Confined Spaces 2020.

2 Assessment Criteria

Confined spaces are determined based on whether they meet certain criteria based on the structure and a specific set of circumstances. These criteria are stated in the Australian Standard AS 2865 – 2009: *Confined Spaces* and in the Safe Work Australia's *Confined Space Code of Practice (2020)*.

There are three criteria based on the structure of the space and four criteria based on the specific set of circumstances which are:

- 1) Is space enclosed or partially enclosed? (AS 2865 – 2009, Figure 1; SWA Code of Practice (2020), Appendix B – Criteria A)**
- 2) Is space intended or designed primarily for other than human occupancy? (AS 2865: - 2009, Figure 1; SWA Code of Practice (2020), Appendix B – Criteria B)**
 - a. Places intended for human occupancy that have adequate ventilation, lighting and safe means of entry and exit are not confined spaces (Safe Work Australia, 2020).
 - b. Enclosed or partially enclosed spaces that are designed to be occasionally occupied by a person if the space has a readily and conveniently accessible means of entry and exit via a doorway at ground level are not confined spaces (Safe Work Australia, 2020).
 - c. Access points should be large enough to allow people wearing the necessary protective clothing and equipment to pass through, and to permit the rescue of all people who may enter the confined space (Safe Work Australia, 2020).
 - d. Some enclosed or partially enclosed spaces that at particular times have harmful airborne contaminants but are designed for a person to occupy, for example abrasive blasting or spray booths (Safe Work Australia, 2020).
- 3) Is the space designed or intended to be at normal atmospheric pressure while a person is in the space? (SWA Code of Practice (2020), Appendix B – Criteria C)**

- a. Where a space is not normally at atmospheric pressure (for example a boiler) it must be brought to atmospheric pressure before a person enters the space, as part of the risk control process (Safe Work Australia, 2020)
 - b. Environments where a space is not at normal atmospheric pressure, such as in decompression chambers, are not considered confined space. For spaces at pressures significantly higher or lower than the normal atmospheric pressure, expert guidance should be sought to undertake risk assessment of the space.
- 4) Has space an oxygen concentration outside the safe oxygen range? (AS 2865 – 2009, Figure 1; SWA Code of Practice (2020), Appendix B – Criteria D)**
- a. Air normally contains 21% oxygen by volume, although levels of 19.5% - 23.5% by volume are considered to be safe (Safe Work Australia, 2020).
 - b. Situations that can cause the level of oxygen to dramatically decrease, leading to an oxygen deficient atmosphere and possible asphyxiation include:
 - i. Displaced by gases produced during biological processes, for example, methane in a sewer;
 - ii. Displaced during purging of a confined space with an inert gas to remove flammable or toxic fumes;
 - iii. Depleted inside metal tanks and vessels through surface oxidation (for example, when rust forms);
 - iv. Consumed during combustion of flammable substances;
 - v. Absorbed or reacts with grains, wood chips, soil or chemicals in sealed silos.
 - c. Situations that cause the level of oxygen to dramatically increase, leading to an oxygen enriched atmosphere and increased risk of fire or explosion include:
 - i. Chemical reactions that cause the production of oxygen, for example certain reactions with hydrogen peroxide;
 - ii. Leaking of oxygen from an oxygen tank or fitting while using oxy-acetylene equipment.
- 5) Has space an airborne contaminant that may cause impairment, loss of consciousness or asphyxiation? (AS 2865 - 2009, Figure 1; SWA Code of Practice (2020), Appendix B – Criteria D)**
- a. Situations causing the build-up of harmful airborne contaminants that may cause impairment, loss of consciousness or asphyxiation include:
 - i. Substances stored in the confined space or its by-product(s) (e.g. build-up of hydrogen sulphide in sewers, pits and tanks of decomposing organic material, especially when material is disturbed);
 - ii. Work performed in the confined space (e.g. the use of paints, adhesives, solvents or cleaning products; welding or brazing with metals capable of producing toxic fumes; exhaust fumes from engines used in the confined space; painting or moulding glass-reinforced plastics);
 - iii. Entry of natural contaminants (e.g. groundwater and gases into the confined space from surrounding land, soil of strata);
 - iv. Release of airborne contaminants (e.g. when sludge, slurry or other deposits are disturbed or when scale is removed);

- v. Manufacturing process (e.g. residues left in tanks, vessels etc., or remaining on internal surfaces can evaporate into a gas or vapour);
 - vi. Entry and accumulation of gases and liquids from adjacent plant, installations, services or process.
- 6) Has space an airborne contaminant that may cause injury from fire or explosion? (AS 2865 – 2009, Figure 1, SWA Code of Practice (2020), Appendix B – Criteria D)**
- a. A flammable atmosphere is one in which the flammable gas, vapour or mist is likely to exceed 5% of its lower explosive limit (LEL);
 - b. Situations causing flammable atmospheres include:
 - i. Evaporation of a flammable residue;
 - ii. Flammable materials used in the space;
 - iii. A chemical reaction (such as the formation of methane in sewers);
 - iv. The presence of combustible dust (such as flour silos).
- 7) Has space a stored free flowing solid or a rising level of liquid that may cause suffocation or drowning by engulfment? (AS 2865 – 2009, Figure 1; SWA Code of Practice (2020), Appendix B – Criteria D)**
- a. Engulfment is the immersion or envelopment of a person by a solid or liquid (e.g. grain, sugar, flour, sand, coal, fertilizer and other substances in a powder or granular form) that is stored within the confined space (AS 2865:2009).

Figure 1 is the flowchart taken from the *Confined Spaces Code of Practice* (Safe Work Australia, 2020) which demonstrates the process for identifying whether an area is a confined space or not based on the WHS Regulations (2011). For a space to be confirmed as a confined space, the answers to criteria 1, 2 and 3 and at least one of 4, 5, 6, and 7 must be 'Yes.' If the answer to any of the criteria 1, 2, and 3 is 'No', the area is not a confined space, and the remaining criteria do not need to be applied.

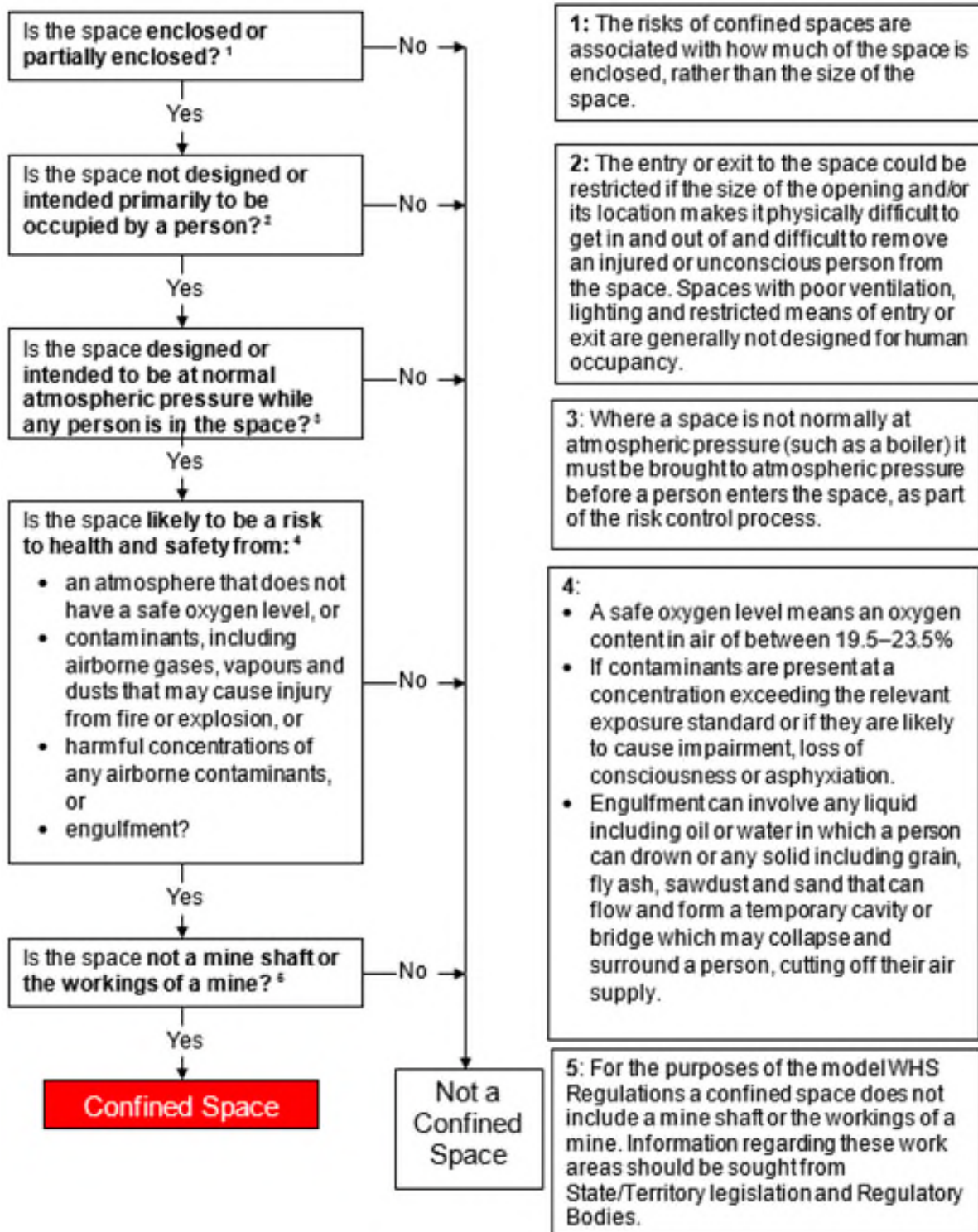


Figure 1: Flowchart to determine if area is a Confined Space (Safe Work Australia, 2020)

3 Confined Space Determination

3.1 Crawl spaces under buildings

The crawl spaces under buildings that were inspected are located under the old physics building of the ANU campus.

The crawl spaces can be accessed via an internal stairwell leading into plant areas under the buildings (Figure 2, Figure 3, Figure 4 and Figure 5) Along these unground tunnel passages there are locations where services may need to be accessed via crawling (Figure 2).The crawl spaces are restricted in height with limited to no lighting and may contain wildlife using it for habitation.

Accessing these spaces is considered to be a confined space due to the restricted means of entry and potential change in atmospheric conditions (gases) will require confined space entry procedures to ensure worker safety.



Figure 2: Crawl Space under building



Figure 3: Access to crawl space



Figure 4: Access to crawl space via tunnel



Figure 5: Access to crawl space via tunnel

Table 1: Confined Space Determination for the Australian National University – Crawl spaces from tunnels

Criteria	Determination	Justification
1. Is the space enclosed or partially enclosed?	Yes	The crawl spaces are either completely enclosed or partially enclosed and accessed along a tunnel. The entry point can be accessed from the tunnels of the old physics building. The access points are restricted to the public.
As the answer is 'Yes', the area could be confined space, and Criteria 2 must be addressed		
2. Is space intended or designed primarily for other than human occupancy?	Yes	<ul style="list-style-type: none"> The primary purpose for access to the crawl spaces under the building is to conducted repairs, maintenance and run new services under the building. The access points can be easily accessed by workers from tunnel, however there is to lighting or limited ventilation designed to support human occupancy.
As the answer is 'Yes', the area could be confined space, and Criteria 3 must be addressed		
3. Is space designed or intended to be at normal atmospheric pressure while a person is in the space?	Yes	Space is designed to be at normal atmospheric pressure.
As the answer is 'Yes', the area could be confined space, and Criteria 4 – 7 must be addressed		

Criteria	Determination	Justification
4. Has space an oxygen concentration outside the safe oxygen range?	Yes	Although oxygen levels at the access points are at atmospheric concentrations, there is potential for chemical build up within the crawl spaces to alter the oxygen concentration. There is also potential for a situation that could affect oxygen levels in the crawl spaces: <ul style="list-style-type: none"> • Build-up of chemical or biological wastes from leaking services or decomposing animal matter.
5. Has space an airborne contaminant that may cause impairment, loss of consciousness or asphyxiation?	Yes	Although no airborne contaminants were measured during the assessment on 13 September, 2023, the presence of corrosive or harmful chemicals present a potential for build-up of harmful airborne contaminants that may cause impairment, loss of consciousness or asphyxiation.
6. Has space an airborne concentration that may cause injury from fire or explosion?	No	It is unlikely that the crawl space would contain sufficient levels of flammable gases or an oxygen-rich environment that may cause injury from fire or explosion.
7. Has space a stored free flowing solid or a rising level of liquid that may cause suffocation or drowning by engulfment?	No	The is not expected to be a risk from free flowing liquids or solids in the crawl spaces.
Final Assessment		
As the Crawl Spaces meet Criteria 1, 2, 3, 4 and 5 it does meet the criteria for classification as a confined space.		

4 Entry Requirements

Access to the confined space mentioned in the determination above should be restricted to qualified and authorised ANU staff or contractors with the following control measures implemented:

1. When works involving the crawl spaces under buildings are being conducted, appropriate signage and barricades should be erected to prevent public access.
2. A register of workers/contractors in the space should be provided to a central point, i.e. nearby building in case of emergency.
3. Real-time multi gas monitors should be used to determine the air quality at the entrance, mid level and bottom of the confined space before any entry by workers or contractors takes place.
4. Prior to the commencement of any works in a confined space, the ANU supervisor must be contacted by the workers.

5. Before the commencement of works, workers must check the ANU AED location map and familiarise themselves with the closest AED.

5 Rescue Procedures

1. Immediately contact 000 in an emergency
2. All workers or contractors accessing the confined space should be wearing continuous air monitoring devices (one per work group is sufficient).
3. Allocation of additional workers should be present when works are undertaken in the confined space, to observe the workers and organise rescue effort in the event of an emergency.
4. A defibrillator and first aid kit should be made available when a worker or contractor is entering the confined space in the event someone is requiring medical assistance.
5. Rescue equipment in the form of tripod winch and body harnesses should be used for any contractor or worker entering the confined space.
6. A documented rescue plan for works in the confined space should be developed prior to access and discussed with all workers. This could be a generic plan that can be adopted for all workers accessing the crawl spaces under buildings.

6 Conclusion

Robson Environmental undertook a Confined Space Assessment in various areas of the ANU campus, against the assessment criteria given in the Safe Work Australia *Confined Spaces Code of Practice* (2020) and Australian Standard 2865 (2009) *Confined Spaces*.

According to these criteria and the information gathered during the site inspection, the crawl spaces are **classified as a confined space**. Due to the potential risk to workers accessing the crawl spaces if there is a failure of controls or build-up of airborne contaminants, the control measures listed in Section 4 should be implemented to ensure the safety of contractors and workers who require access to these areas for maintenance or repairs.

7 Limitations

While Robson has taken all care to ensure that this report includes the most accurate information available, samples were taken at certain times on the day or days indicated within the report and Robson is unable to comment on conditions at other times. Any statement of expected conditions at other times should be taken as possible conditions only.

The report, including any risk assessment presented, is based on the information obtained by Robson at the time of sampling. Any variation in the environment, activities, methods, practices, products, or equipment used may change exposures to hazards, invalidating the presented risk assessment. Robson recommends that risks be re-assessed prior to making any changes to the aforementioned factors.

The findings contained within this report are developed from the interpretation of the results of specific sampling methods used in accordance with generally accepted practices and standards, based on the current state of knowledge. To the best of Robson's knowledge, our assessment of the data represents a reasonable interpretation of the general conditions, and subsequent risk at the time of

sampling. Should you have any questions or require further information please contact Robson Environmental.

8 References

- Safe Work Australia 2020, *Confined Spaces - Code of Practice*, Safe Work Australia.
- Standards Australia 2009, *Confined Spaces*, AS 2865 – 2009, Standards Australia.
- *Work Health and Safety Act 2011* (ACT)
- *Work Health and Safety Regulations 2011* (ACT)