

Staff Guide – Editing ASR transcripts on EchoVideo

Last reviewed: 21 July 2023

Automatic Speech Recognition (ASR) describes the technology that is used by EchoVideo to generate text-based transcripts and closed captions from the audio in our videos.

Editing ASR transcripts on EchoVideo

Editing ASR transcripts on EchoVideo can help improve the accuracy and readability of the generated transcripts. These instructions step through how to edit ASR transcripts on EchoVideo.

1. Log into Wattle using your UniID (u1234567).
2. Locate your EchoVideo activity.

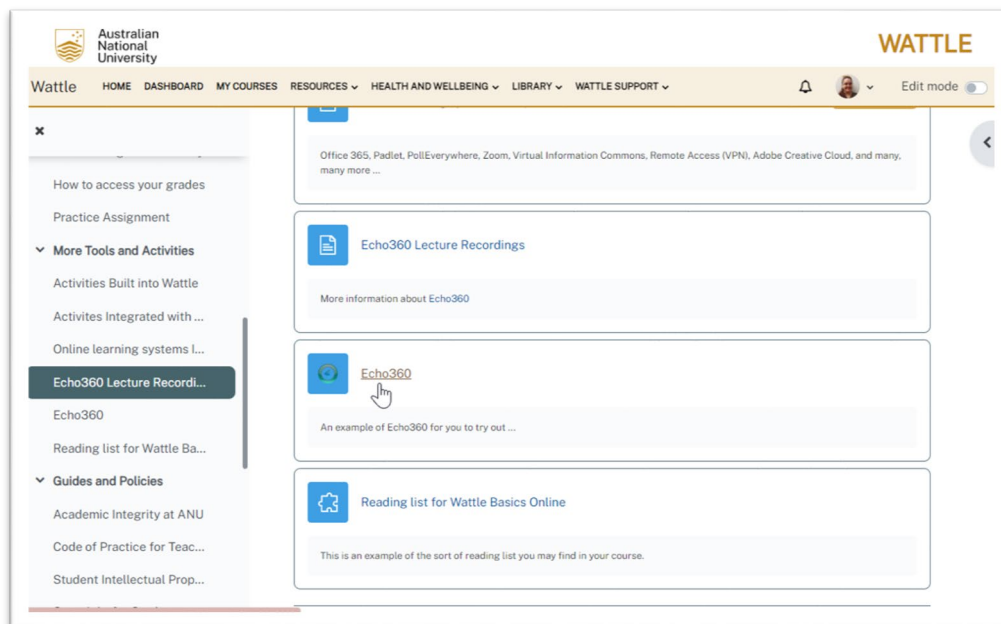


Figure 1. Screenshot of a Wattle course with the cursor pointing to the Echo360 activity link.

3. Click on it to be directed to the EchoVideo dashboard.
4. Find the lecture recording for which you want to edit the ASR transcript.

5. Open the options for the recording by clicking the **course media** button.

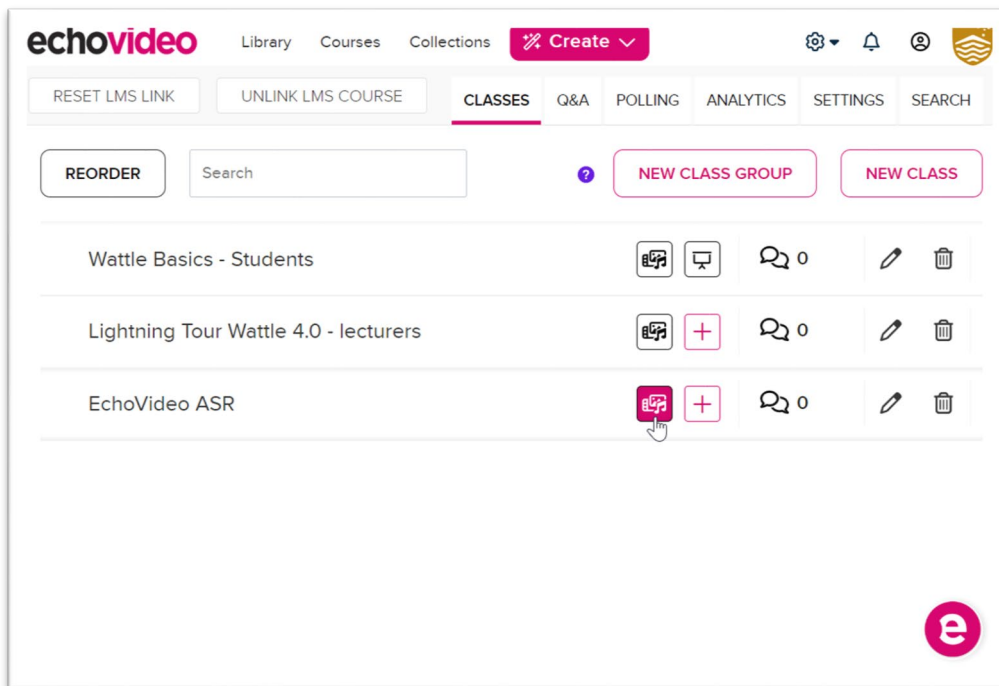


Figure 2. Screenshot of the EchoVideo dashboard with the cursor pointing to the **course media** button.

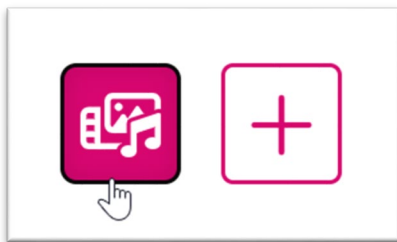


Figure 3. Screenshot of two EchoVideo buttons. The **Course media** button is on the left and **Add presentation** button is on the right.

6. Select **Edit Transcript** from the drop-down menu.

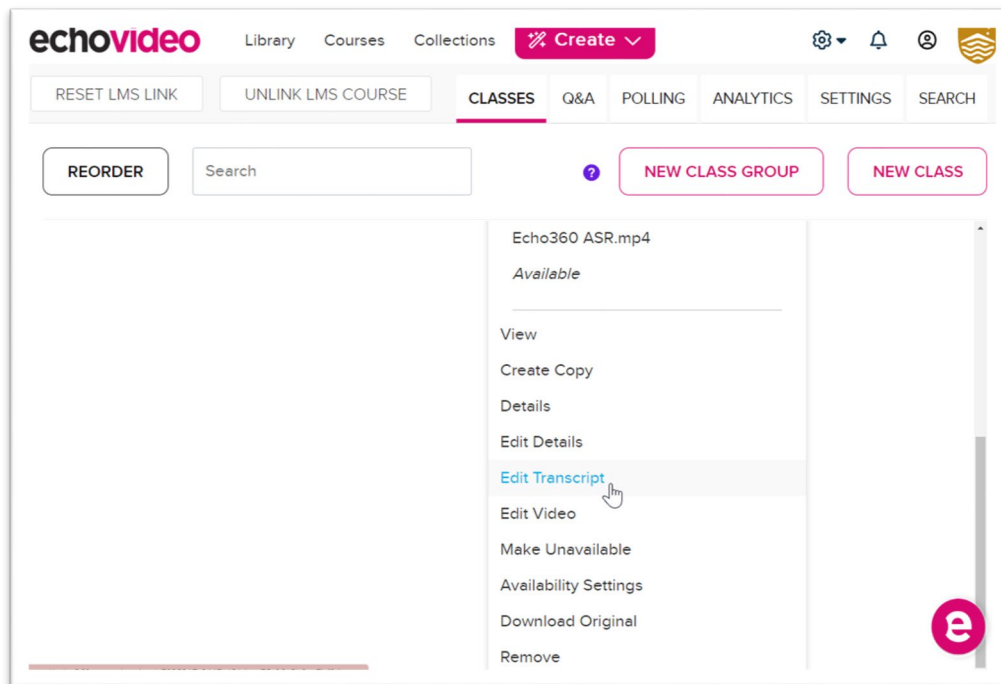


Figure 4. Screenshot of the EchoVideo dashboard with the cursor pointing to the Edit Transcript button.

7. Familiarise yourself with the interface. Take a moment to explore the transcript editor interface. It typically consists of a text box displaying the automatically generated transcript and additional controls for editing the text.

8. Review the automatically generated transcript and edit to correct it.

The ASR technology may have made mistakes, so you should focus on improving accuracy, grammar, punctuation, and formatting.

Example:

The sentence **The Echo360 ASR automatically creates text transcripts**

was transcribed as **The ACHO 3 60 A sr automatically creates text transcripts**

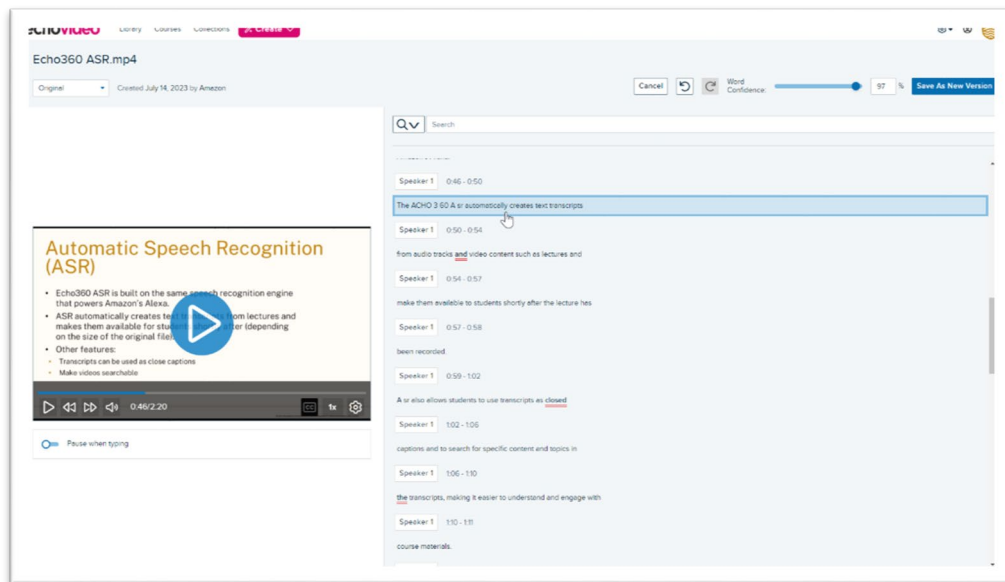


Figure 5. Screenshot of the EchoVideo dashboard with the cursor pointing to an incorrect sentence in the transcript. The sentence says “The ACHO 3 60 A sr automatically creates text transcripts”.

- Correct your sentence by deleting the incorrect parts (using your **Backspace** or **Delete** functions) and retyping it correctly.

Note: Words displayed as bold and underlined in red have been recognised with a lower confidence value than that set by the **Word Confidence** slider. This can give you a quick clue as to where edits may be required. If your video is playing as you edit, playback will skip to the start of any phrase when you click to edit it.

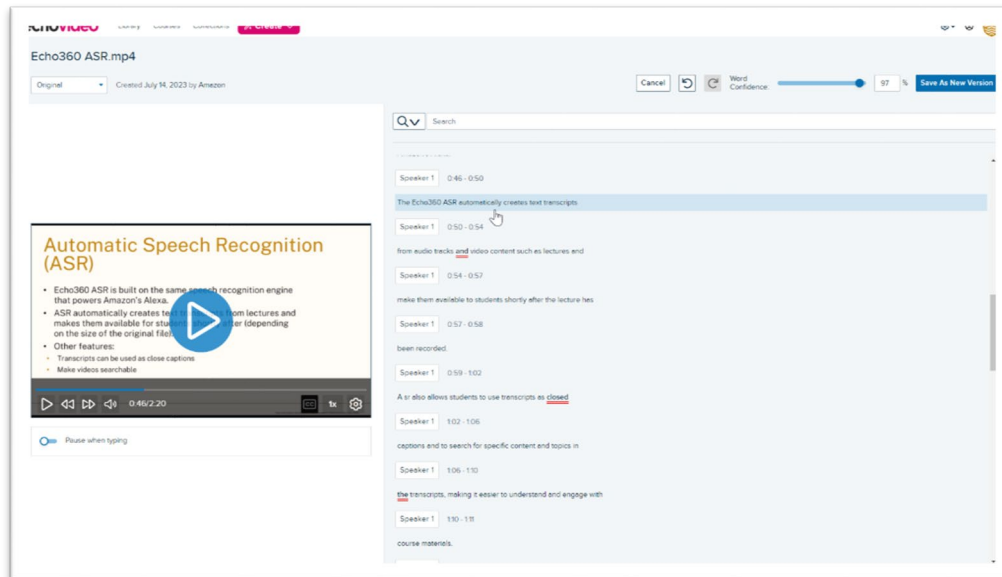


Figure 6. Screenshot of the EchoVideo dashboard with the cursor pointing to the same sentence as before, but now it is corrected to “The Echo360 ASR automatically creates text transcripts”.

Tip: Use the integrated playback controls to listen to the audio or video while simultaneously reading the transcript. This allows you to ensure that the edits you make align with the actual content.

Saving your corrections

10. Save your changes using the **Save As New Version** button which is usually located at the top right corner of your EchoVideo window.

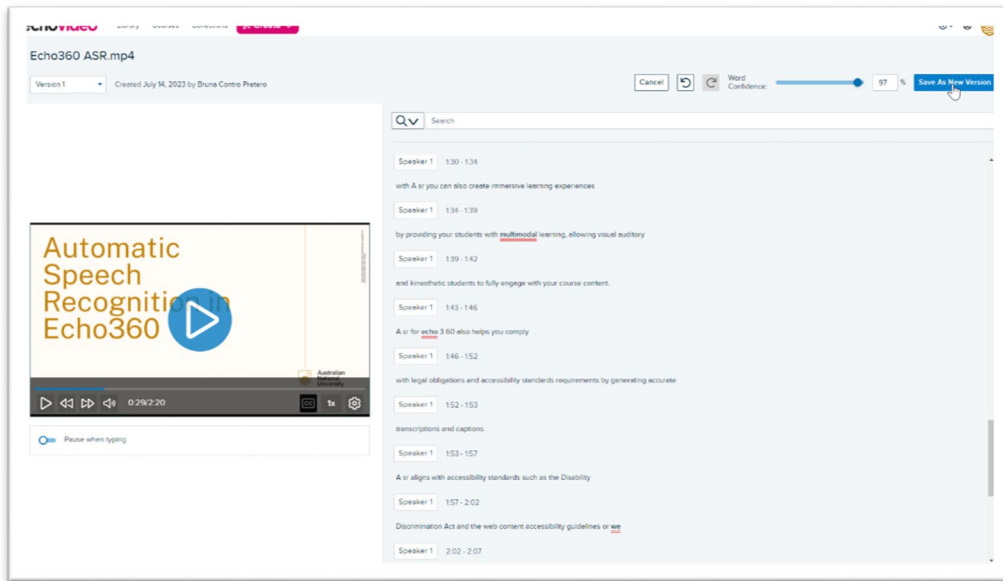


Figure 7. Screenshot of the EchoVideo dashboard with the cursor pointing to the **Save As New Version** button.

11. You will be asked if you want to save this transcript as another version, in this example, Version 5. By clicking on Apply, EchoVideo will automatically apply the revised transcript to your lecture. It will also automatically apply this change to the captions.

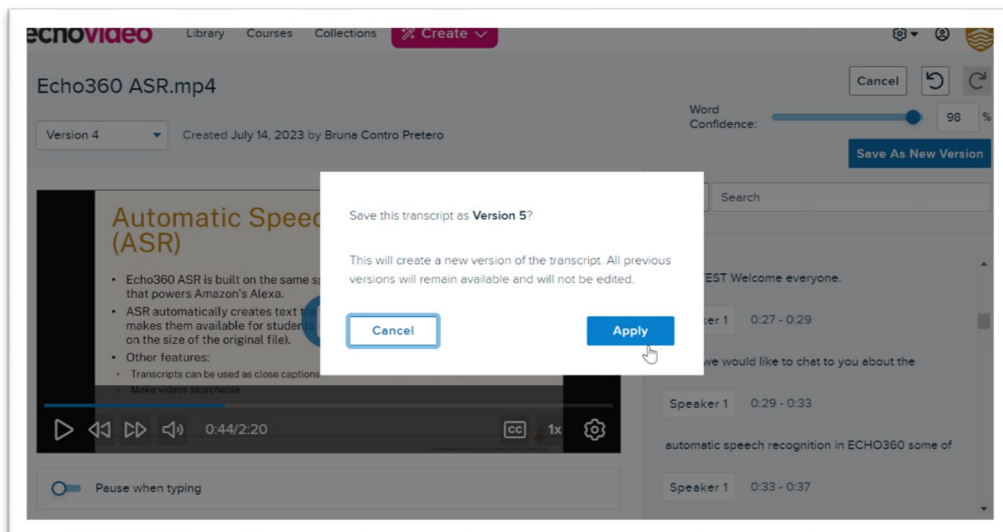


Figure 8. Screenshot of the EchoVideo dashboard with a pop-up window. The cursor points to the **Apply** button.

12. After publishing the edited transcript, verify that it is accessible and visible to students within the EchoVideo platform. To verify your transcript, follow the steps below.
 - a. Go back to the dashboard with your lectures.
 - b. Select the lecture you edited to open your lecture recording.

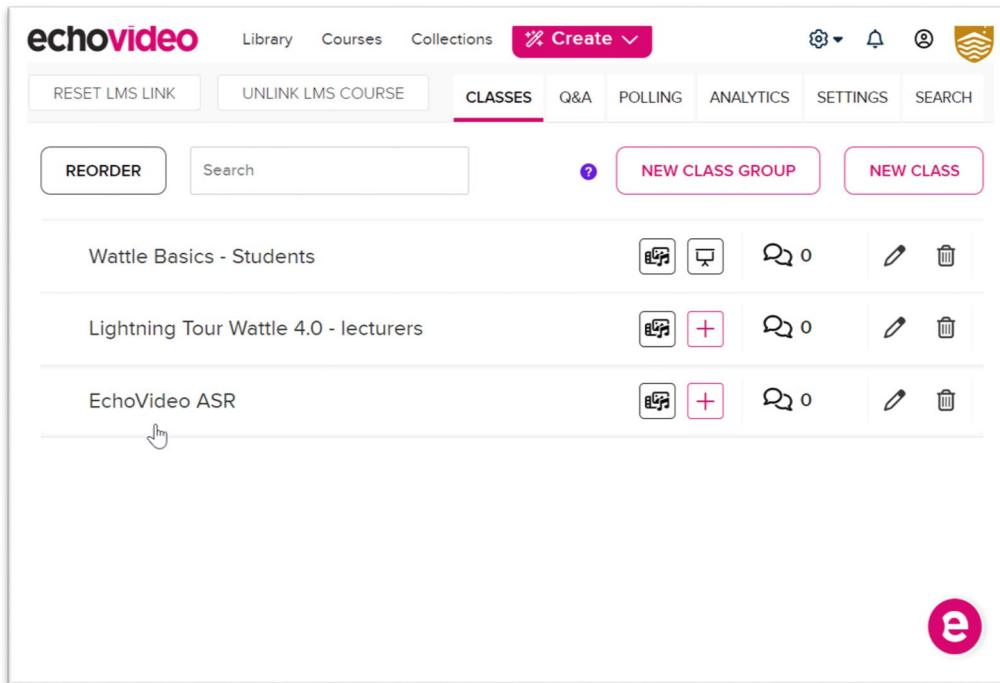


Figure 9. Screenshot of the EchoVideo dashboard with the cursor pointing to a class called "EchoVideo ASR".

- c. Select the **Transcript** button and the transcript panel will be displayed.

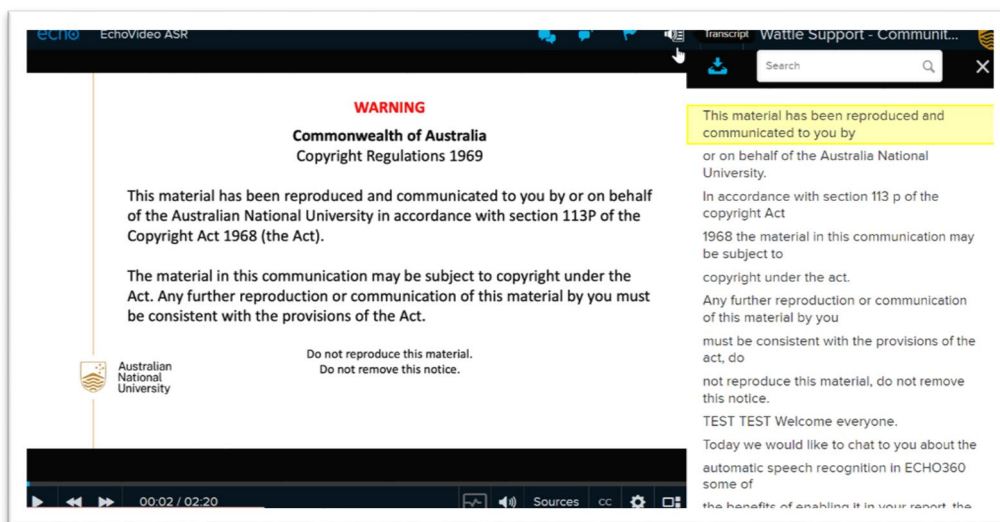


Figure 10. Screenshot of the EchoVideo dashboard with the cursor pointing to a class called "EchoVideo ASR".

By following these instructions, we can effectively edit the automated transcripts in EchoVideo, to improve accuracy and create better learning experiences for our students.

Accuracy level

The Word confidence level for the transcription text to be automatically included as captions is set at 75%. Please note that students registered for accessibility services are not required to rely solely on these captions or transcripts. Contact the Accessibility service (access.inclusion@anu.edu.au) for queries specific to students registered with their service.

Need help

If you need further assistance with EchoVideo, please submit a ticket with the [IT Service Desk](#) (opens the IT Service Desk).

AUTHOR: Bruna Pretero, Digital Accessibility, ITS

DATE WRITTEN: 21 July 2023

REVIEWERS: Jenny Edwards, CLT, Katherine Kwan, LSSG

DATE REVIEWED: 21 July 2023